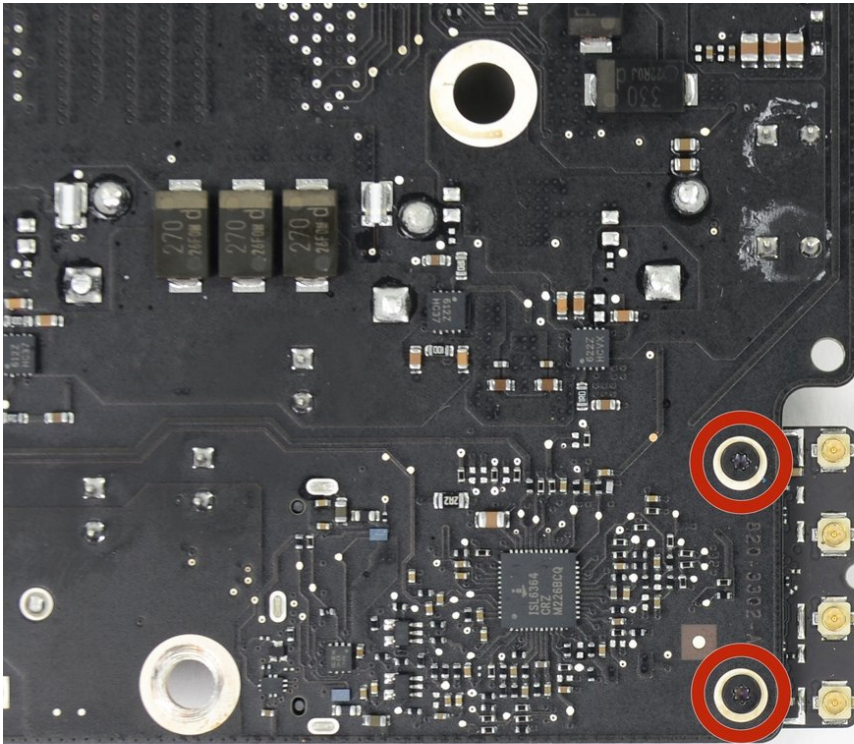




iMac Intel 21.5" EMC 2544 AirPort/Bluetooth Card Replacement

Prereq for removing logic board, heat sink gone.

Written By: Walter Galan



INTRODUCTION

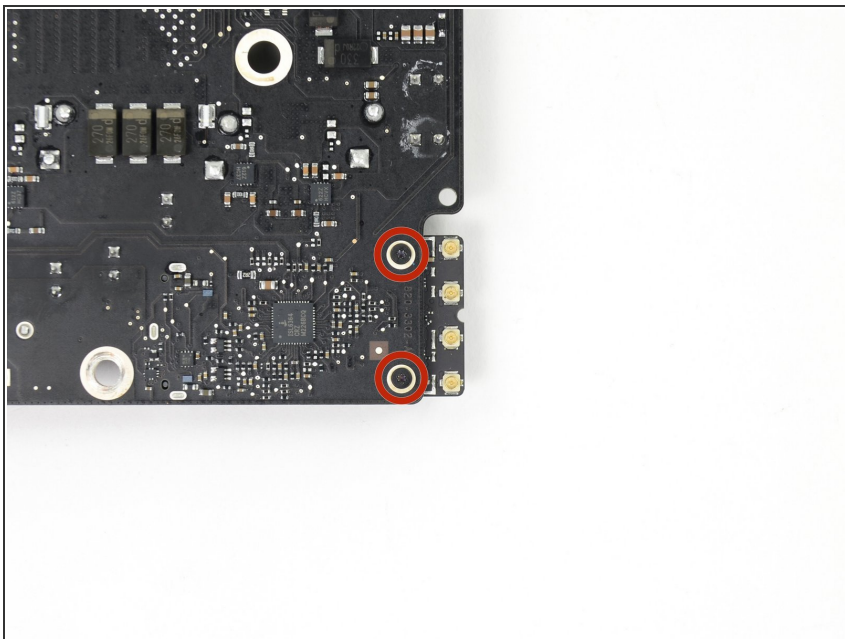
Prereq for removing logic board, heat sink gone.



TOOLS:

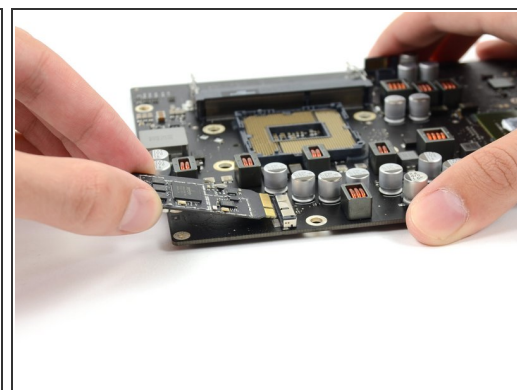
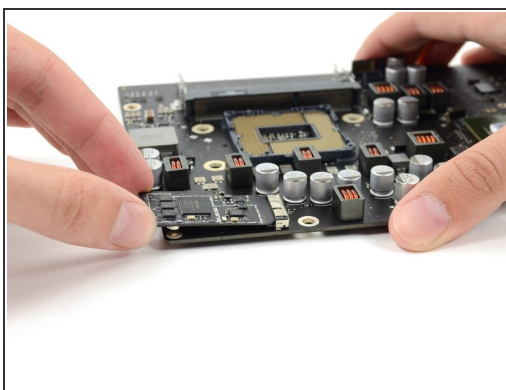
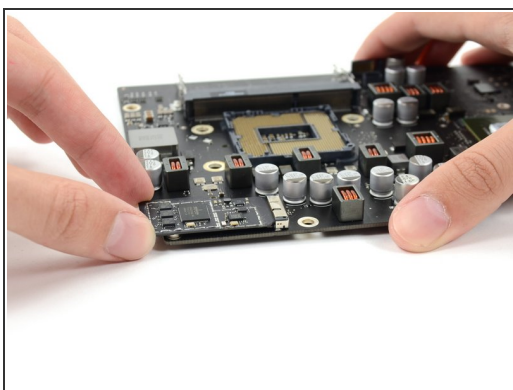
- [T5 Torx Screwdriver](#) (1)
-

Step 1 — AirPort/Bluetooth Card



- Remove the two 3.2 mm T5 screws securing the AirPort/Bluetooth card to the logic board.

Step 2



- Lift the end of the AirPort/Bluetooth card slightly, and pull it straight out of its socket on the logic board.

To reassemble your device, follow these instructions in reverse order.